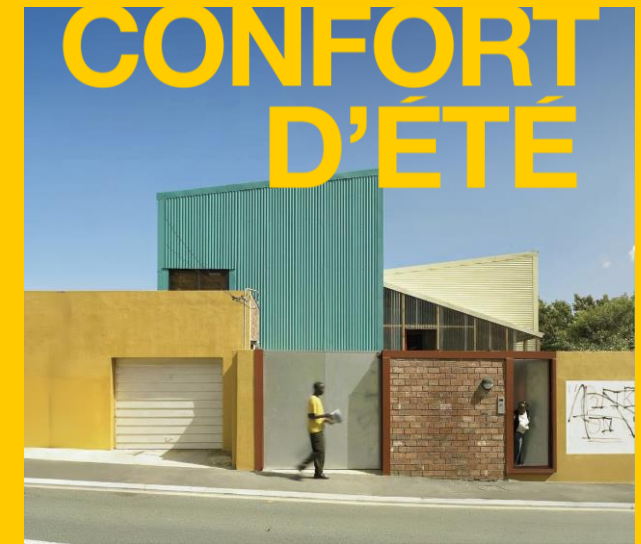




**#9**  
**BÂTIFRAIS**  
Colloque confort d'été dans  
les bâtiments et les quartiers **2024**

9<sup>e</sup> COLLOQUE  
NATIONAL  
INTERPROFESSIONNEL

DES SOLUTIONS DURABLES  
POUR DES BÂTIMENTS  
RÉSILIENTS FACE AU  
CHANGEMENT CLIMATIQUE



**BUILDING  
RESILIENCE**  
CLIMATE CHANGE – THE IMPORTANT  
ROLE HUMANS PLAY  
CARIN SMUTS



## FRANCE AND SOUTH AFRICA POPULATION AND UNEMPLOYMENT STATISTICS



**DISTANCE:** Cape Town to Marseille 12,134.1 Km

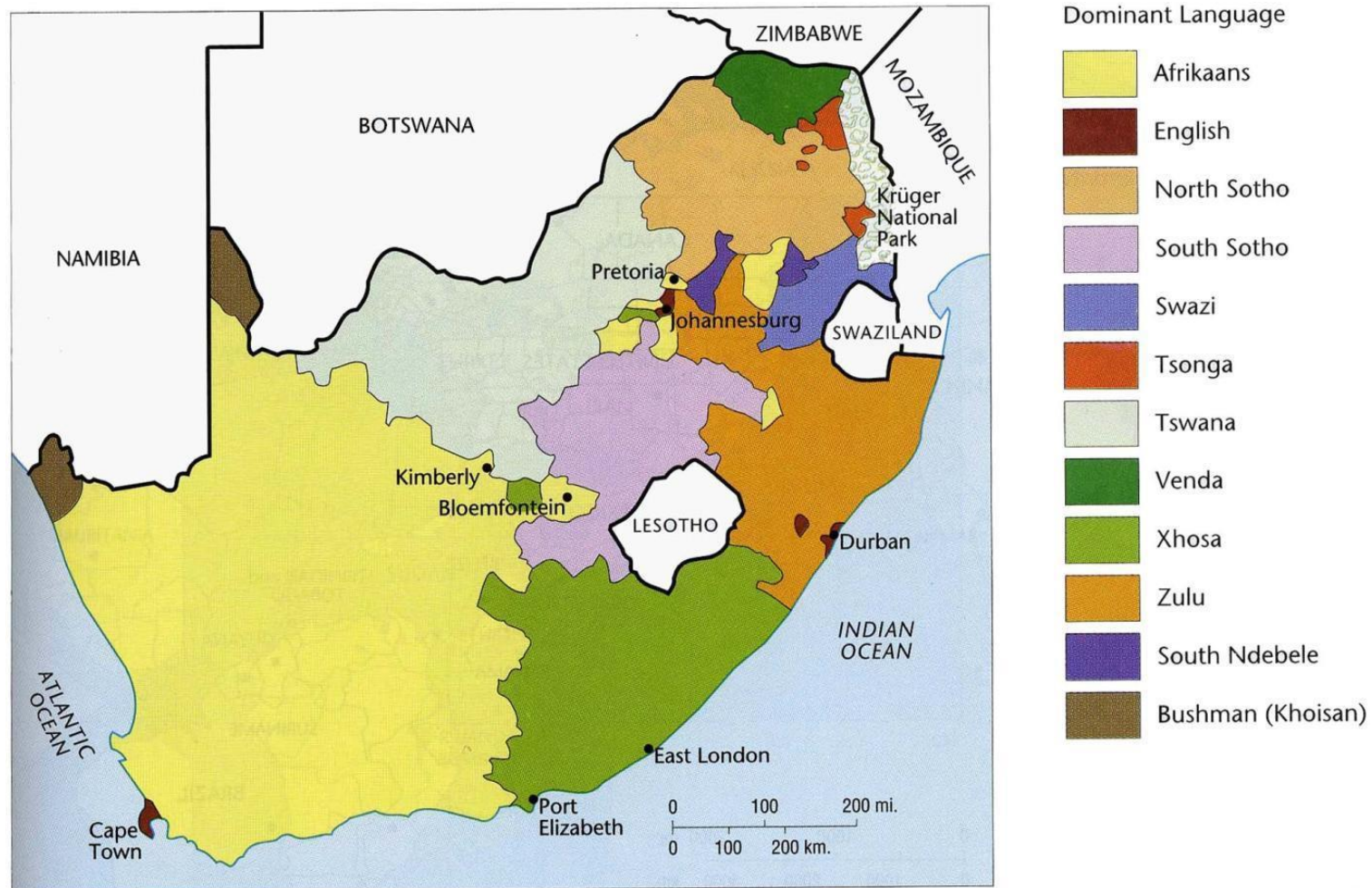
**POPULATION [2024]:** France 64,88 Million

South Africa 61 Million

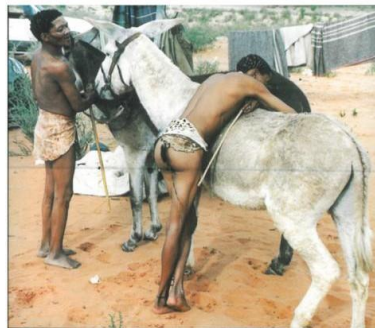
**UNEMPLOYMENT RATE [2024]:** France 7,3%

South Africa 33,5%

## LANGUAGES OF THE REPUBLIC OF SOUTH AFRICA



## FIRST INDIGENOUS PEOPLES' OF SOUTHERN AFRICA, KHOISAN PEOPLES



CHIEFS RECEIVING CERTIFICATES OF ACKNOWLEDGEMENT, NELSON MANDELA UNIVERSITY, GQEBERHA, SOUTH AFRICA



DR MAGDA MINGUZZI

## THE NDEBELE ESTHER MAHLANGU



## THE NDEBELE



## LUXURY HOUSING, WATERFRONT, CAPE TOWN





## INFORMAL HOUSING, KHAYELITSHA, CAPE TOWN











FLOODING  
CAPE TOWN, SOUTH AFRICA



PHILIPPI, INFORMAL SETTLEMENT



GOODWOOD, SUBURB

FLOODING  
DUBAI, UNITED ARAB EMIRATES



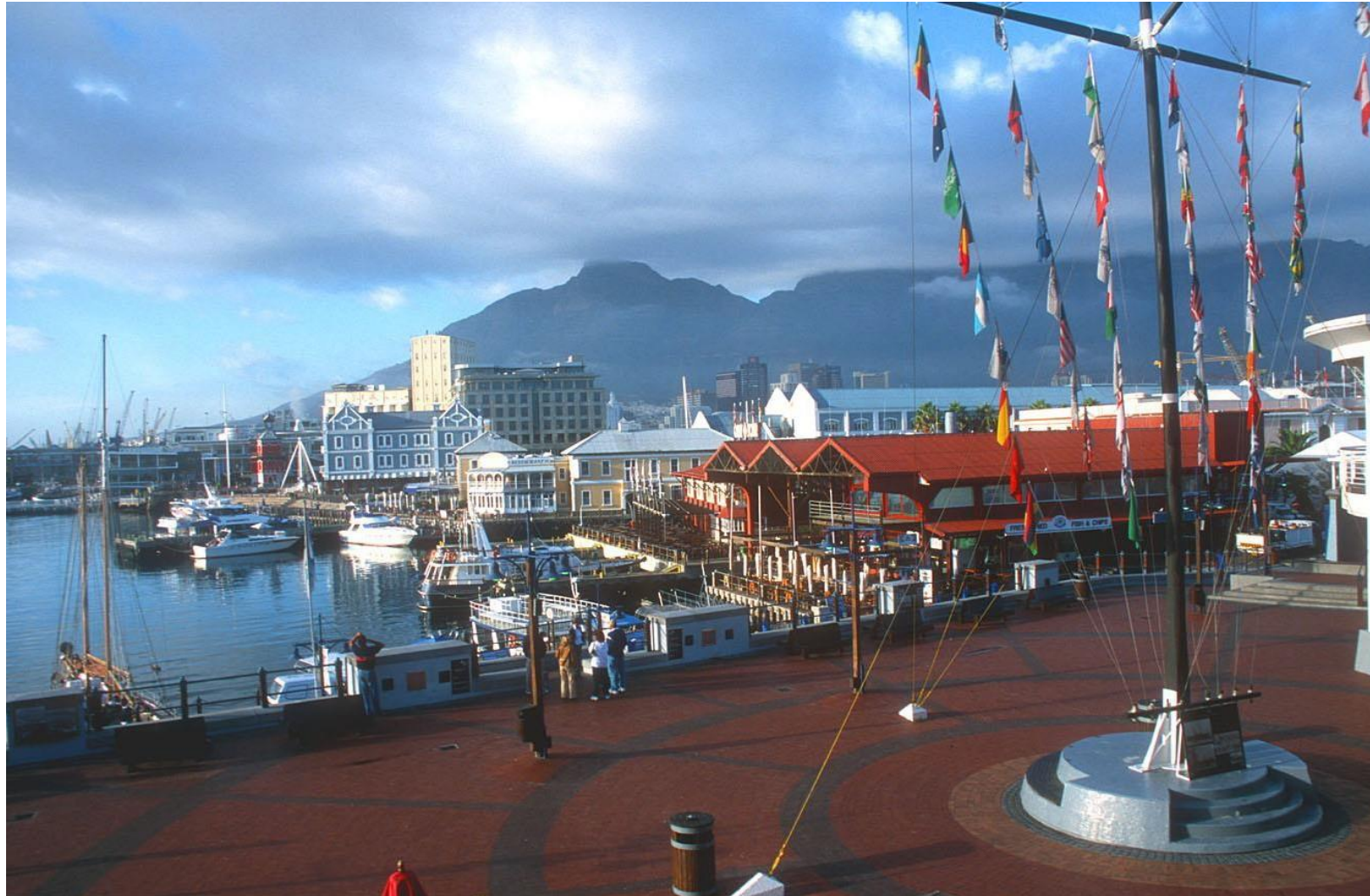
## FLOODING LUGO, ITALY





HEAT WAVES  
NEW DELHI, INDIA





**“The gradually growing hegemony of the eye seems to be parallel with the development of Western ego – consciousness and increasing separation of the self from the world” (Juhani Pallasmaa)**



**"Culture is the product of people's history. But it also reflects that history, and embodies a whole set of values by which people view themselves and their place in time and space." (Wa Thiong'o Ngugi)**



**AFRICA**



**AMERICAS**



**EUROPE**



## **SUSTAINABILITY – has three legs ...**

### **SOCIAL**

**CULTURAL PRESERVATION  
PREVENTING OPPRESSION  
ENCOURAGE HUMAN CREATIVITY  
RESTORE HUMAN DIGNITY**

### **ECONOMIC**

**ECONOMIC SURVIVAL  
EMPOWERMENT  
TRAINING  
JOB CREATION  
OWNERSHIP**

### **ENVIRONMENTAL**

**MINIMISE CARBON FOOTPRINT  
LOCAL MATERIALS AND SKILLS  
NATURAL LIGHT AND VENTILATION  
RENEWABLE ENERGY  
RECYCLING MATERIAL**

### **HOW?**

**INTELLECTUAL SHIFT  
HOUSEHOLD QUESTIONNAIRE  
INTERVIEWS  
GAMES  
WORKSHOPS  
PUBLIC MEETINGS**



### **WHY!**

**PARTICIPATION  
  
EMPOWERMENT  
  
SUSTAINABILITY**

**... Without one leg the  
pot will collapse**

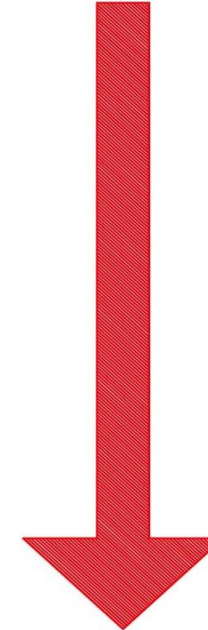
**PARTICIPATION**



**ACTION (IMPLEMENTATION)  
EMPOWERMENT  
CONSULTATION  
INSTALLING TRUST**

**BOTTOM-UP  
APPROACH**

**TOP-DOWN  
APPROACH**



**MANIPULATION  
TOKENISM  
SELF-ENRICHMENT  
TALK NO ACTION**

**NON-PARTICIPATION**

DES SOLUTIONS  
DURABLES  
POUR DES  
BÂTIMENTS  
RÉSILIENTS  
FACE AU  
CHANGEMENT  
CLIMATIQUE



## THEMES

- **LOCAL RESOURCES - HUMAN & MATERIAL**  
EERSTREETJIES, KOMAGGAS, NAMAQUALAND
- **RECYCLING AND UPCYCLING**  
HOUSE BESTER, KUILSRIVER, CAPE TOWN
- **COLLABORATION**  
GUGA S'THEBE CHILDREN THEATRE, LANGA, CAPE TOWN

## LOCAL RESOURCES - HUMAN & MATERIAL



9<sup>e</sup> COLLOQUE  
NATIONAL  
INTERPROFESSIONNEL

DES SOLUTIONS  
DURABLES  
POUR DES  
BÂTIMENTS  
RÉSILIENTS  
FACE AU  
CHANGEMENT  
CLIMATIQUE

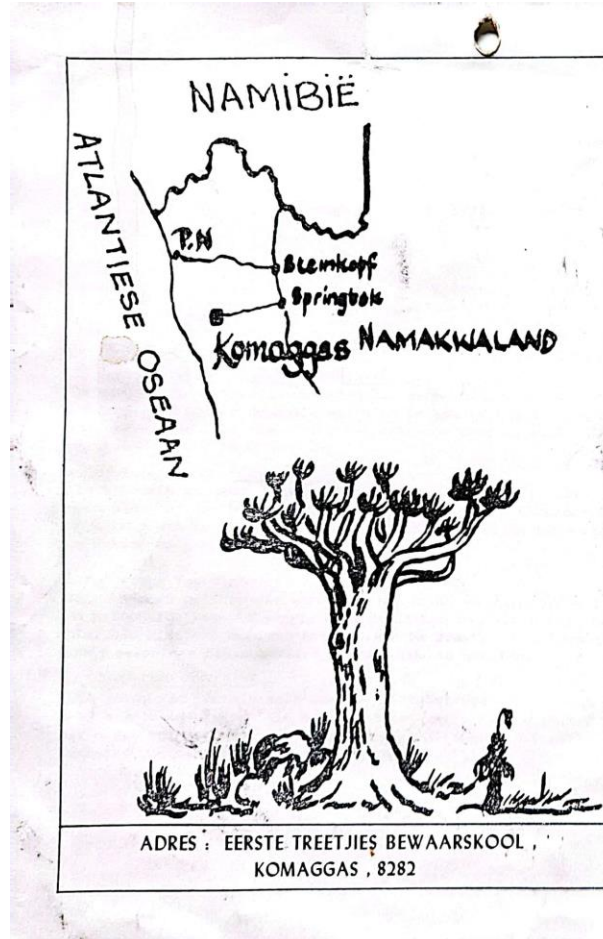




LOCAL RESOURCES - HUMAN & MATERIAL  
**EERSTREETJIES, KOMAGGAS NAMAQUALAND**



LOCAL RESOURCES - HUMAN & MATERIAL  
**EERSTETREETJIES, KOMAGGAS NAMAQUALAND**



LOCAL RESOURCES - HUMAN & MATERIAL  
**EERSTREETJIES, KOMAGGAS NAMAQUALAND**



LOCAL RESOURCES - HUMAN & MATERIAL  
**EERSTREETJIES, KOMAGGAS NAMAQUALAND**



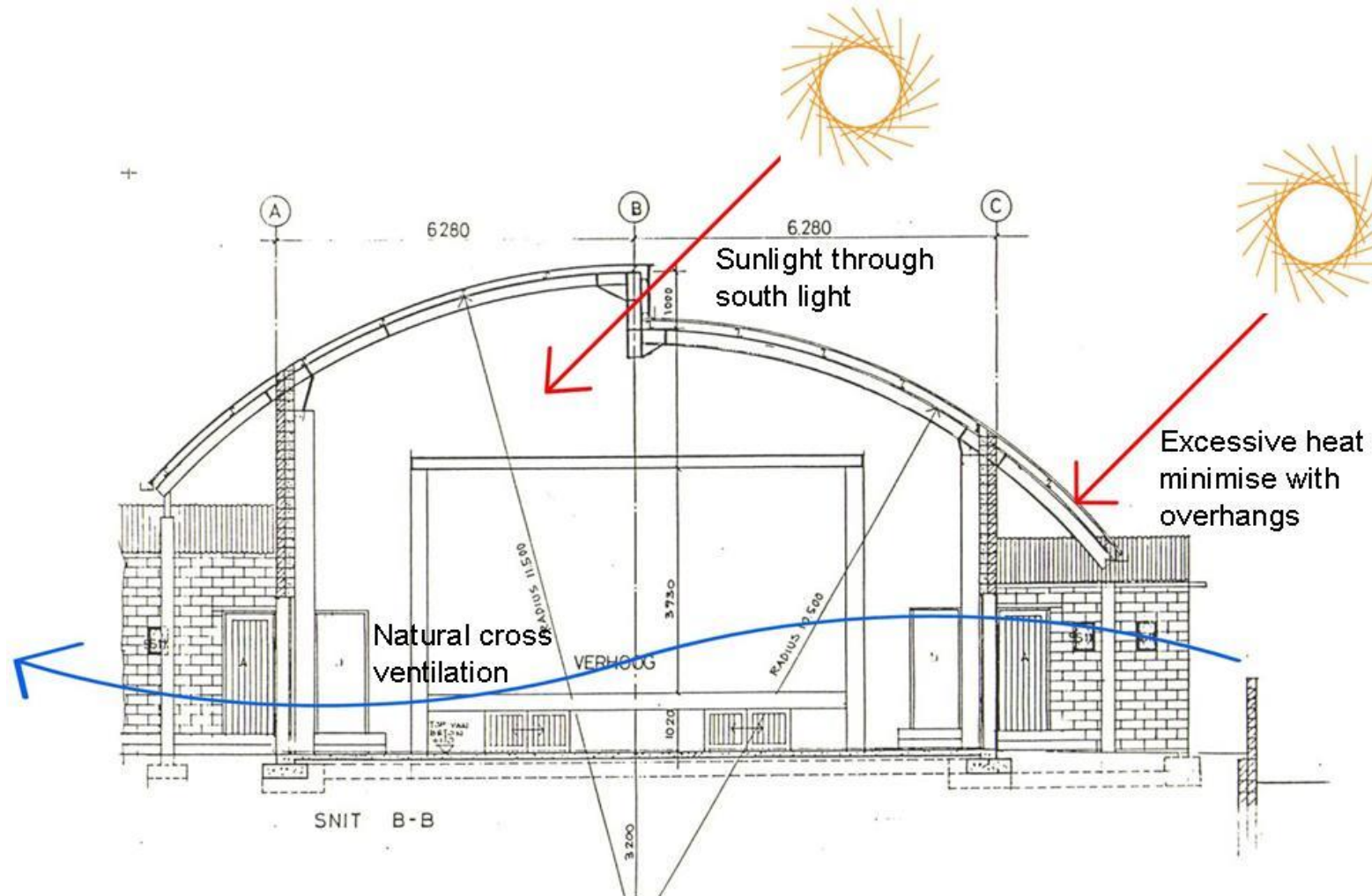
LOCAL RESOURCES - HUMAN & MATERIAL  
**EERSTREETJIES, KOMAGGAS NAMAQUALAND**



LOCAL RESOURCES - HUMAN & MATERIAL  
**EERSTREETJIES, KOMAGGAS NAMAQUALAND**



LOCAL RESOURCES - HUMAN & MATERIAL  
**EERSTREETJIES, KOMAGGAS NAMAQUALAND**



LOCAL RESOURCES - HUMAN & MATERIAL  
**EERSTREETJIES, KOMAGGAS NAMAQUALAND**





LOCAL RESOURCES - HUMAN & MATERIAL  
**EERSTREETJIES, KOMAGGAS NAMAQUALAND**



LOCAL RESOURCES - HUMAN & MATERIAL  
**EERSTETREETJIES, KOMAGGAS NAMAQUALAND**



LOCAL RESOURCES - HUMAN & MATERIAL  
**GUGA S'THEBE CULTURAL VILLAGE, LANGA**



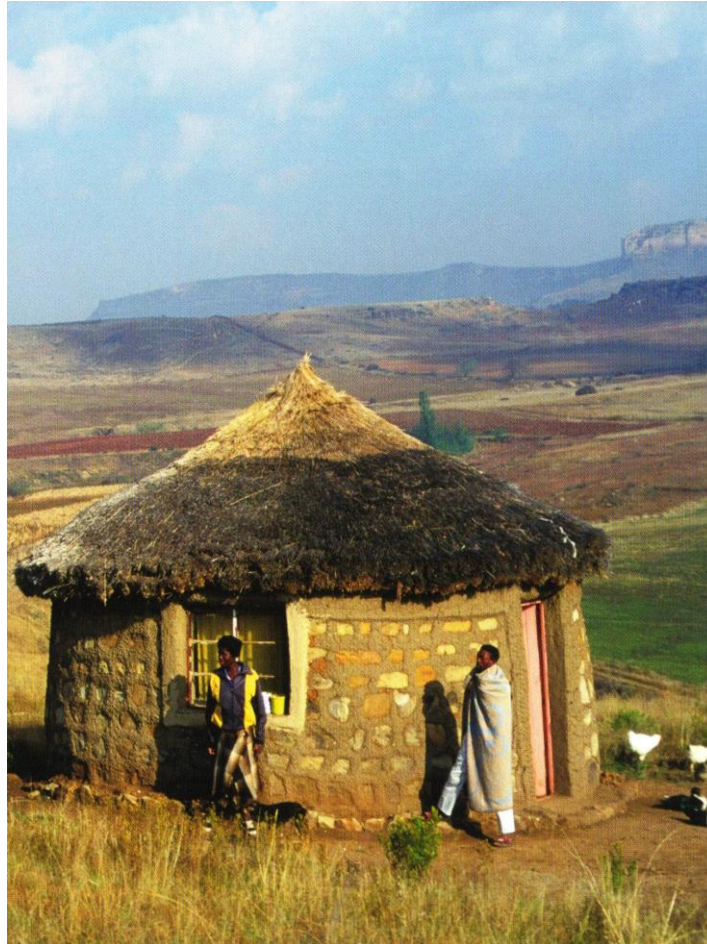
LOCAL RESOURCES - HUMAN & MATERIAL  
**GUGA S'THEBE CULTURAL VILLAGE, LANGA**



LOCAL RESOURCES - HUMAN & MATERIAL  
**GUGA S'THEBE CULTURAL VILLAGE, LANGA**



LOCAL RESOURCES - HUMAN & MATERIAL  
**GUGA S'THEBE CULTURAL VILLAGE, LANGA**



LOCAL RESOURCES - HUMAN & MATERIAL  
**GUGA S'THEBE CULTURAL VILLAGE, LANGA**

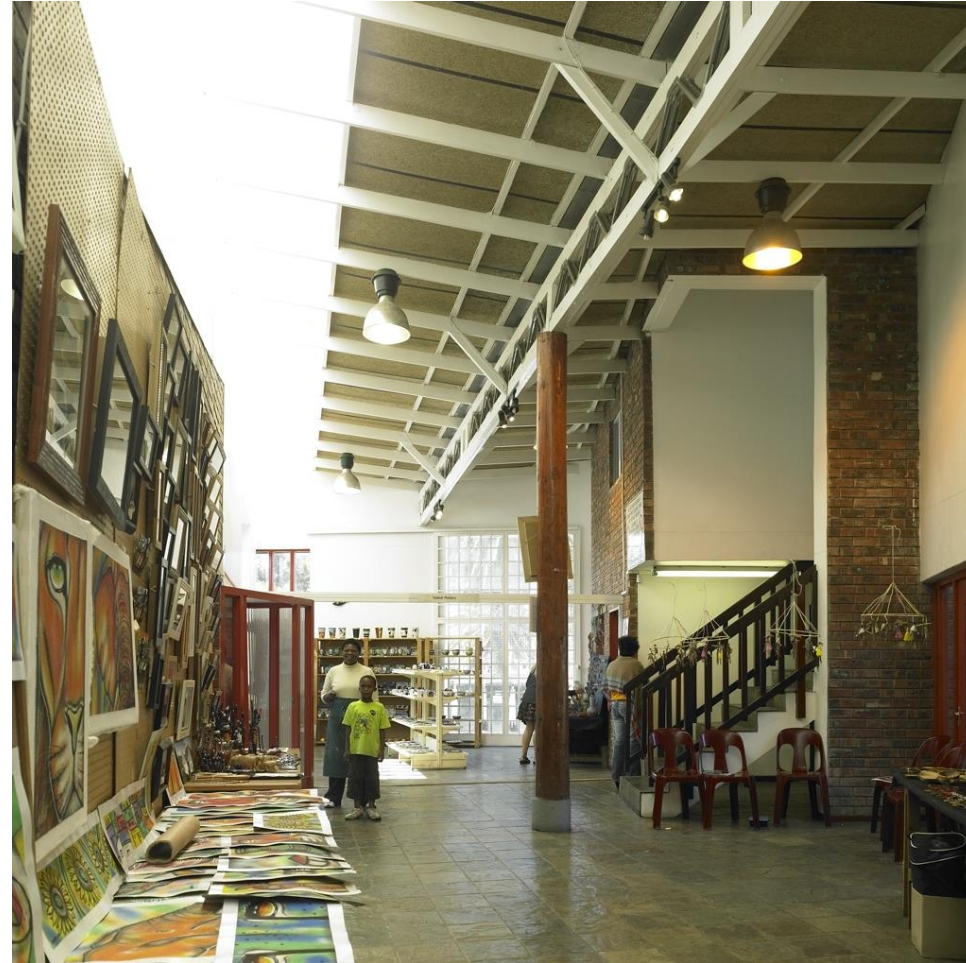


LOCAL RESOURCES - HUMAN & MATERIAL  
**GUGA S'THEBE CULTURAL VILLAGE, LANGA**





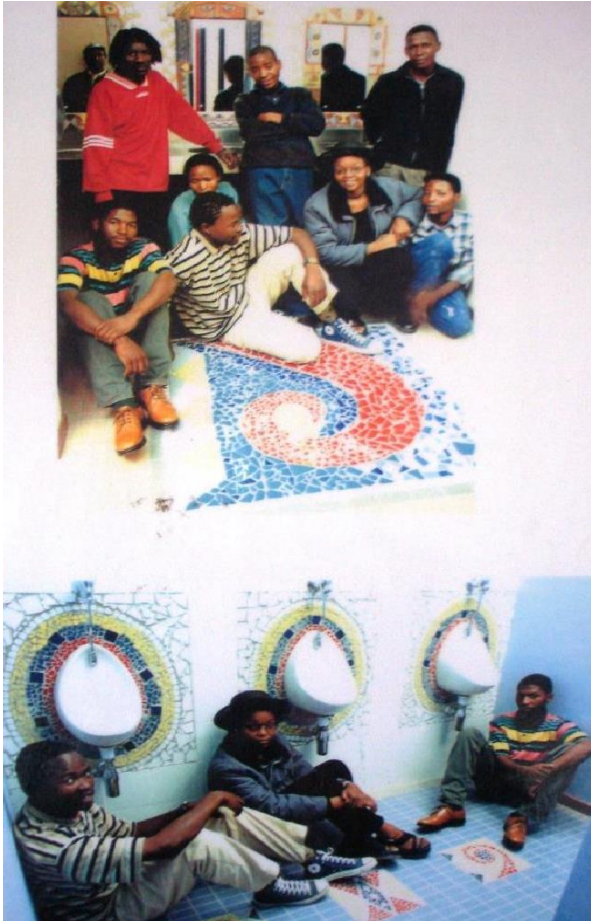
LOCAL RESOURCES - HUMAN & MATERIAL  
**GUGA S'THEBE CULTURAL VILLAGE, LANGA**



LOCAL RESOURCES - HUMAN & MATERIAL  
**GUGA S'THEBE CULTURAL VILLAGE, LANGA**



LOCAL RESOURCES - HUMAN & MATERIAL  
**GUGA S'THEBE CULTURAL VILLAGE, LANGA**



LOCAL RESOURCES - HUMAN & MATERIAL  
**GUGA S'THEBE CULTURAL VILLAGE, LANGA**



LOCAL RESOURCES - HUMAN & MATERIAL  
**GUGA S'THEBE CULTURAL VILLAGE, LANGA**



LOCAL RESOURCES - HUMAN & MATERIAL  
**GUGA S'THEBE CULTURAL VILLAGE, LANGA**



LOCAL RESOURCES - HUMAN & MATERIAL  
**GUGA S'THEBE CULTURAL VILLAGE, LANGA**



**LOCAL RESOURCES - HUMAN & MATERIAL  
SYMPHONY WAY CLINIC, DELFT**

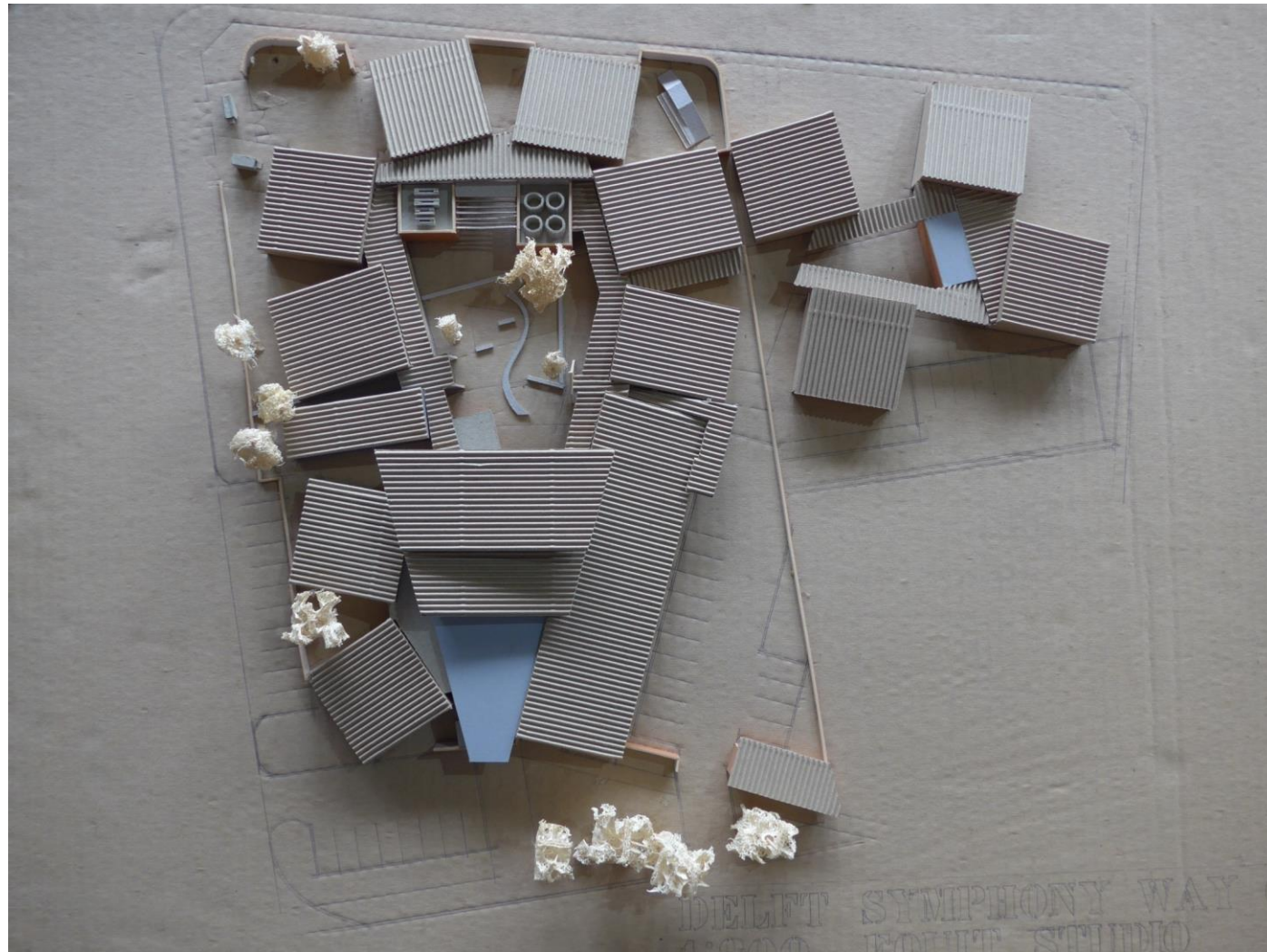




LOCAL RESOURCES - HUMAN & MATERIAL  
SYMPHONY WAY CLINIC, DELFT



LOCAL RESOURCES - HUMAN & MATERIAL  
**SYMPHONY WAY CLINIC, DELFT**



LOCAL RESOURCES - HUMAN & MATERIAL  
SYMPHONY WAY CLINIC, DELFT



**LOCAL RESOURCES - HUMAN & MATERIAL  
SYMPHONY WAY CLINIC, DELFT**



LOCAL RESOURCES - HUMAN & MATERIAL  
**SYMPHONY WAY CLINIC, DELFT**



**LOCAL RESOURCES - HUMAN & MATERIAL  
SYMPHONY WAY CLINIC, DELFT**



LOCAL RESOURCES - HUMAN & MATERIAL  
**SYMPHONY WAY CLINIC, DELFT**



LOCAL RESOURCES - HUMAN & MATERIAL  
**SYMPHONY WAY CLINIC, DELFT**





LOCAL RESOURCES - HUMAN & MATERIAL  
**SYMPHONY WAY CLINIC, DELFT**



**LOCAL RESOURCES - HUMAN & MATERIAL  
SYMPHONY WAY CLINIC, DELFT**



LOCAL RESOURCES - HUMAN & MATERIAL  
**SYMPHONY WAY CLINIC, DELFT**



LOCAL RESOURCES - HUMAN & MATERIAL  
**SYMPHONY WAY CLINIC, DELFT**



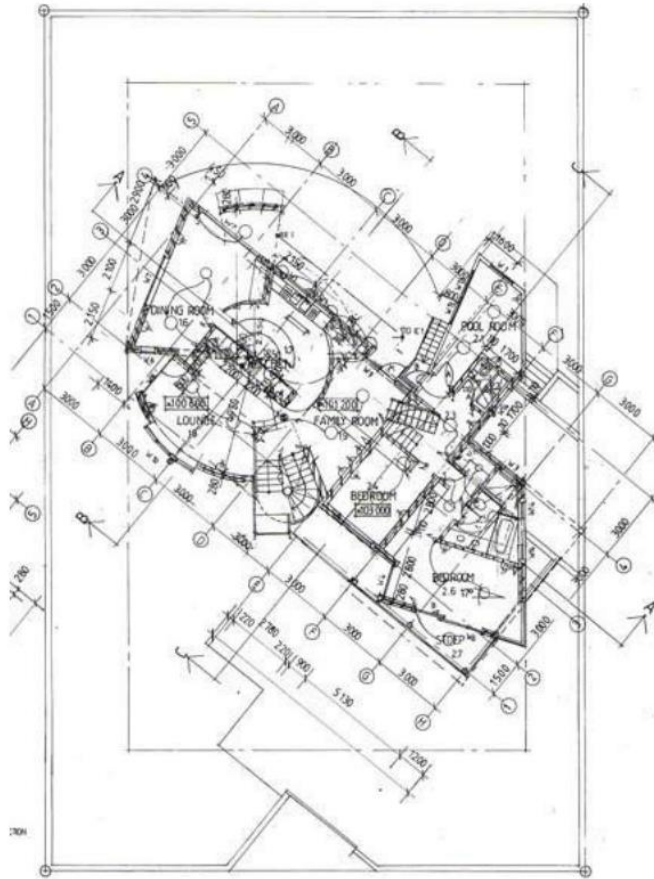
## RECYCLING AND UPCYCLING



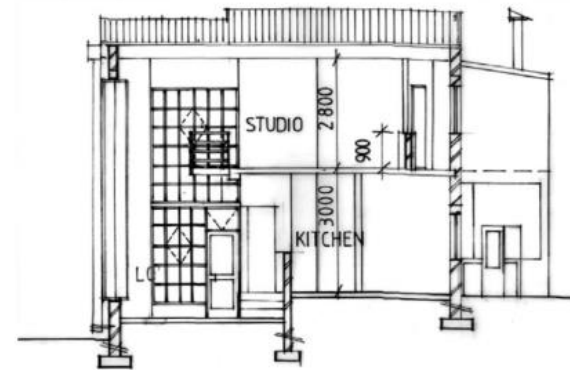
RECYCLING AND UPCYCLING  
HOUSE BESTER, KUILSRIVER



RECYCLING AND UPCYCLING  
HOUSE BESTER, KUILSRIVER



SECTION A-A



SECTION B-B

RECYCLING AND UPCYCLING  
HOUSE BESTER, KUILSRIVER





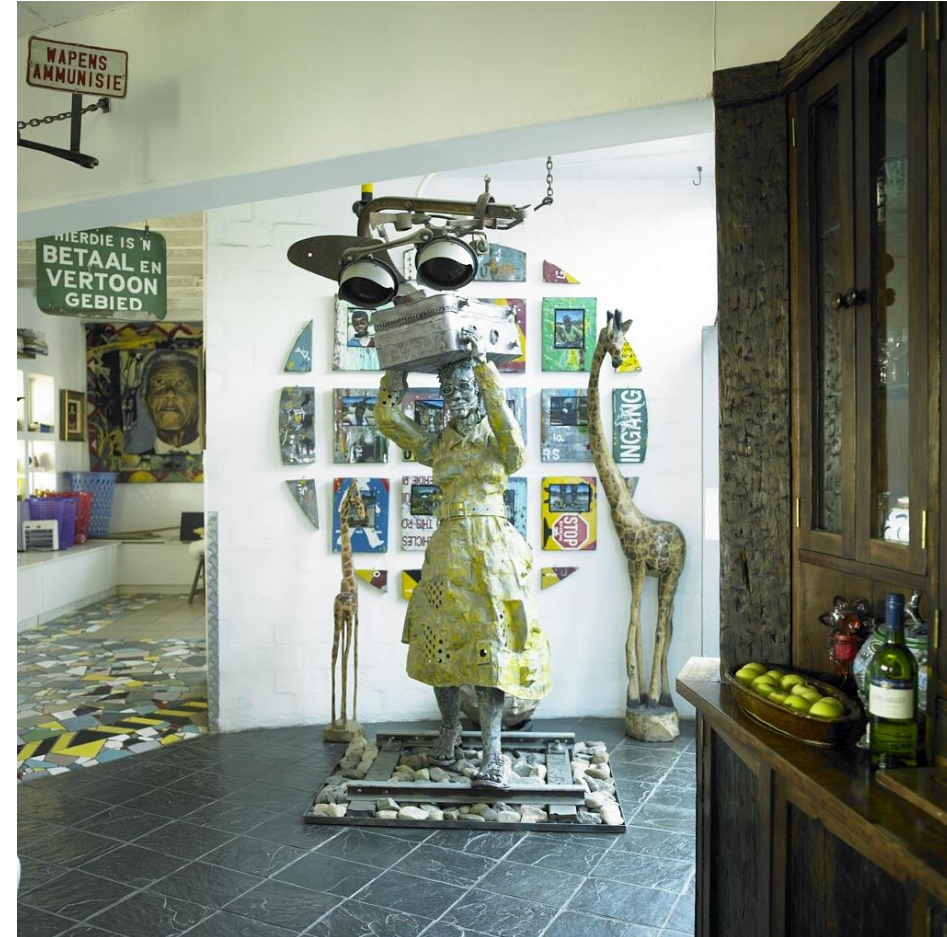
RECYCLING AND UPCYCLING  
HOUSE BESTER, KUILSRIVER



RECYCLING AND UPCYCLING  
HOUSE BESTER, KUILSRIVER



RECYCLING AND UPCYCLING  
HOUSE BESTER, KUILSRIVER



RECYCLING AND UPCYCLING  
HOUSE BESTER, KUILSRIVER



RECYCLING AND UPCYCLING  
HOUSE BESTER, KUILSRIVER



RECYCLING AND UPCYCLING  
**LAINGSBURG MULTI-PURPOSE CENTRE, KAROO**



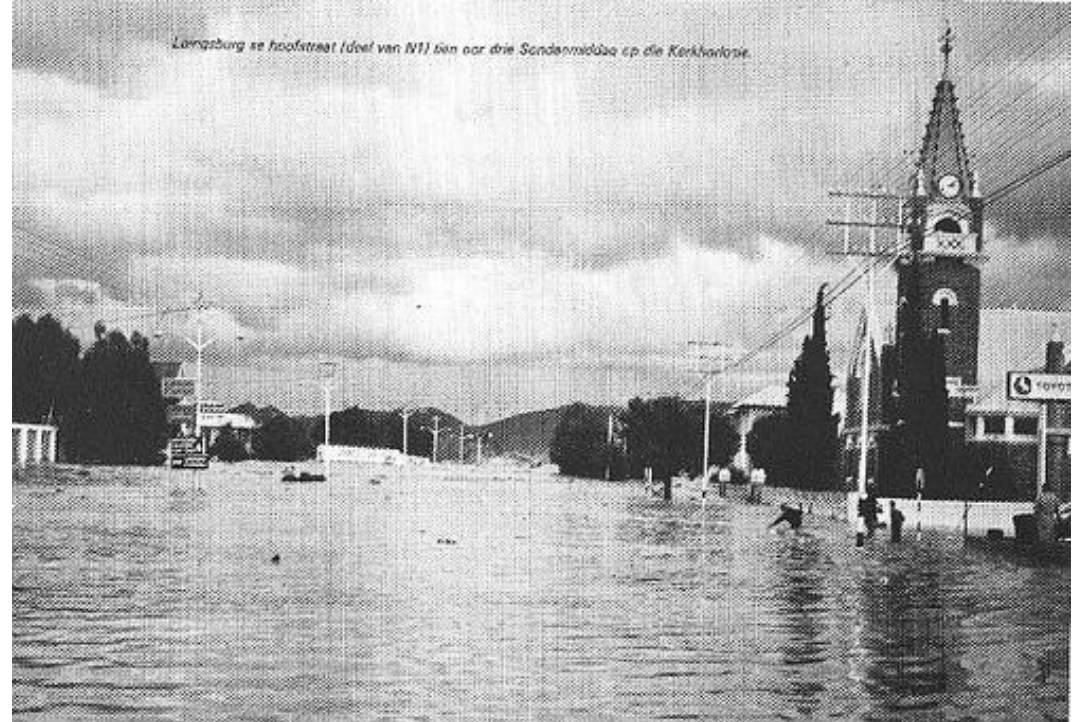
LAINGSBURG, 1981 FLOOD

RECYCLING AND UPCYCLING  
**LAINGSBURG MULTI-PURPOSE CENTRE, KAROO**

*Toe die vlugt sy hoogtepunt bereik het, was al die huise op die woongrond onder water terwyl die waer, sniks nadat die aanlope van die treinbrug padgegee het, bin-nor die brug gaspat het. Koos Spanier het die foto geneem.*



*Laingsburg se hoofstraat (deel van N1) bin oor drie Sondagmiddae op die Kerkhorlosie.*



RECYCLING AND UPCYCLING  
**LAINGSBURG MULTI-PURPOSE CENTRE, KAROO**





## RECYCLING AND UPCYCLING LAINGSBURG MULTI-PURPOSE CENTRE, KAROO

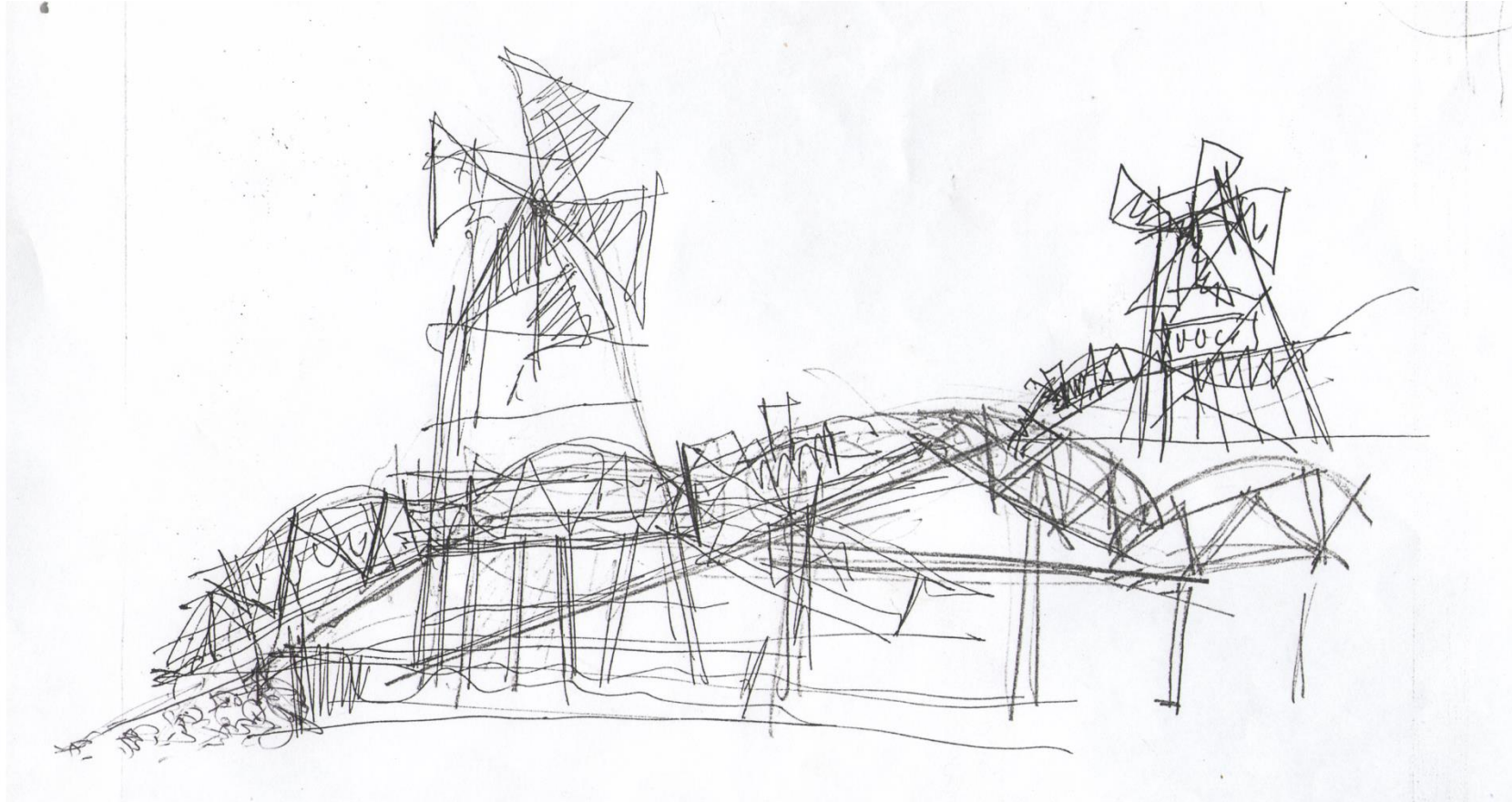


### THE LAINGSBURG FLOOD VICTIM OF 1981

THE WIND BLOWS THROUGH THE TREES  
TELLINGLY TOUCHING HIM  
WHO SWALLOWED STORIES  
THAT NOW  
SUDDENLY SURFACE. STORMS,  
FORGOTTEN ONES ARE  
SAVAGELY UNEARTHED.  
THE BLIZZARD,  
**A RAGING RED BULL** BURIES  
BOYS AND GIRLS, WOMEN  
AND MEN.  
HE BURIES HIS FACE  
INTO HIS SOAKED BLUE SHIRT.  
WATER HAMMERS AGAINST HIS  
TEMPLES.  
THE PRESENT COLLAPSES,  
THE STORM –  
RELIVED!

**DIANA FERRUS**

RECYCLING AND UPCYCLING  
**LAINGSBURG MULTI-PURPOSE CENTRE, KAROO**



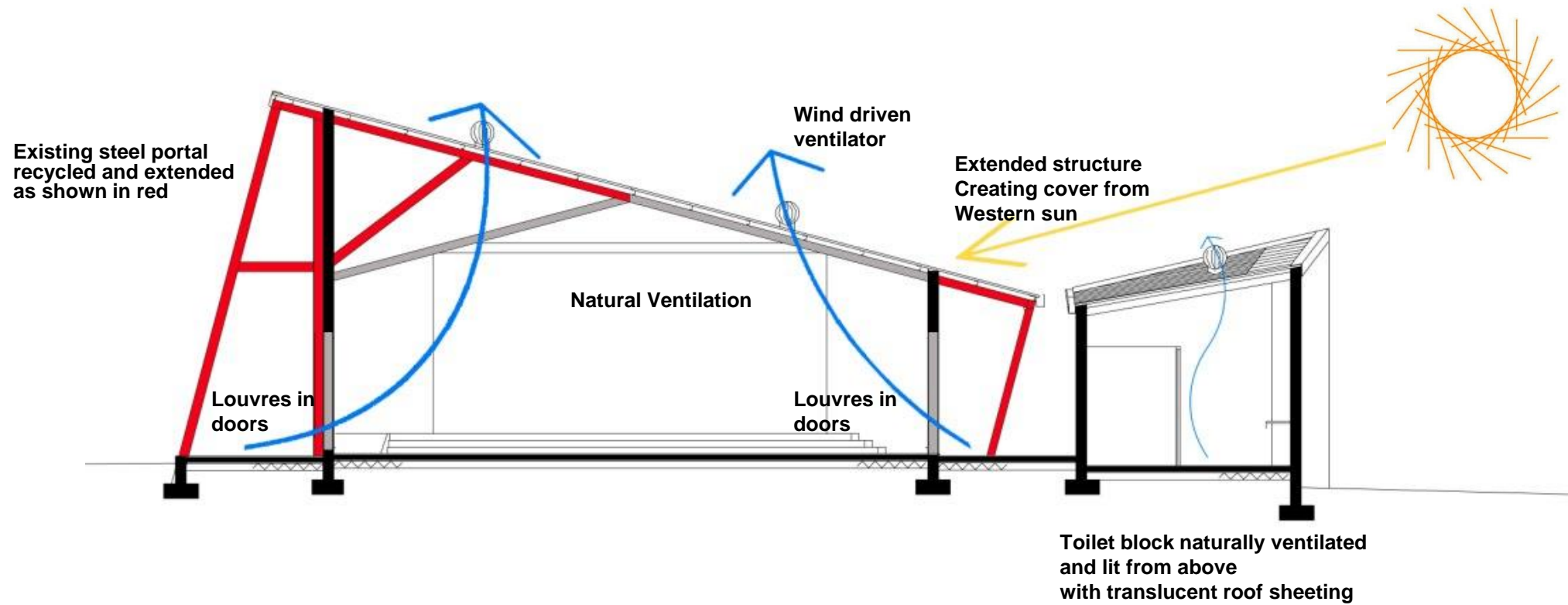
RECYCLING AND UPCYCLING  
**LAINGSBURG MULTI-PURPOSE CENTRE, KAROO**



RECYCLING AND UPCYCLING  
**LAINGSBURG MULTI-PURPOSE CENTRE, KAROO**



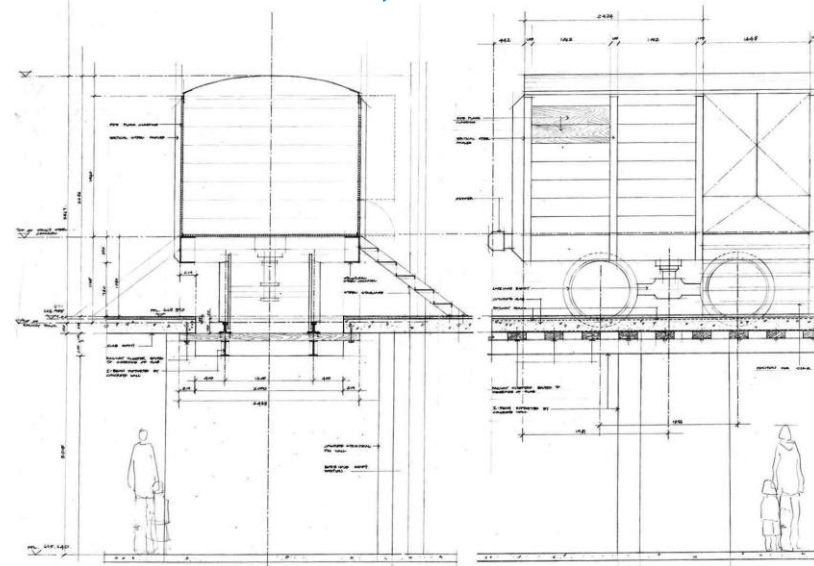
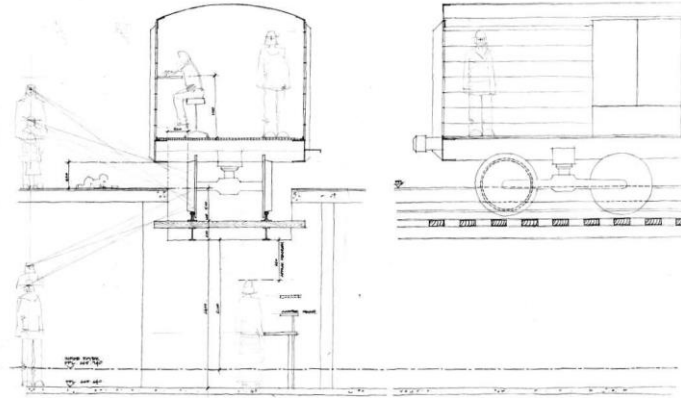
RECYCLING AND UPCYCLING  
**LAINGSBURG MULTI-PURPOSE CENTRE, KAROO**



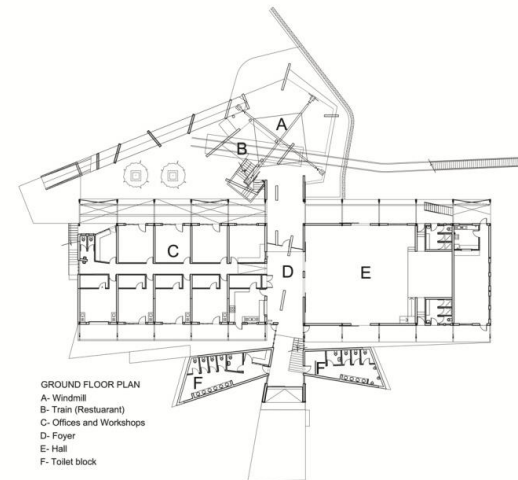
RECYCLING AND UPCYCLING  
**LAINGSBURG MULTI-PURPOSE CENTRE, KAROO**



RECYCLING AND UPCYCLING  
**LAINGSBURG MULTI-PURPOSE CENTRE, KAROO**



PROPOSED STARGASE / WINDPUMP & TRAIN.  
CS STUDIO ARCHITECTS.



GROUND FLOOR PLAN  
A - Windmill  
B - Train (Restaurant)  
C - Offices and Workshops  
D - Foyer  
E - Hall  
F - Toilet block

RECYCLING AND UPCYCLING  
**LAINGSBURG MULTI-PURPOSE CENTRE, KAROO**





RECYCLING AND UPCYCLING  
**LAINGSBURG MULTI-PURPOSE CENTRE, KAROO**



RECYCLING AND UPCYCLING  
**LAINGSBURG MULTI-PURPOSE CENTRE, KAROO**



RECYCLING AND UPCYCLING  
**LAINGSBURG MULTI-PURPOSE CENTRE, KAROO**



RECYCLING AND UPCYCLING  
**LAINGSBURG MULTI-PURPOSE CENTRE, KAROO**



RECYCLING AND UPCYCLING  
**LAINGSBURG MULTI-PURPOSE CENTRE, KAROO**



RECYCLING AND UPCYCLING  
**LAINGSBURG MULTI-PURPOSE CENTRE, KAROO**



RECYCLING AND UPCYCLING  
**GROOTVADERSBOSCH NATURE RESERVE**

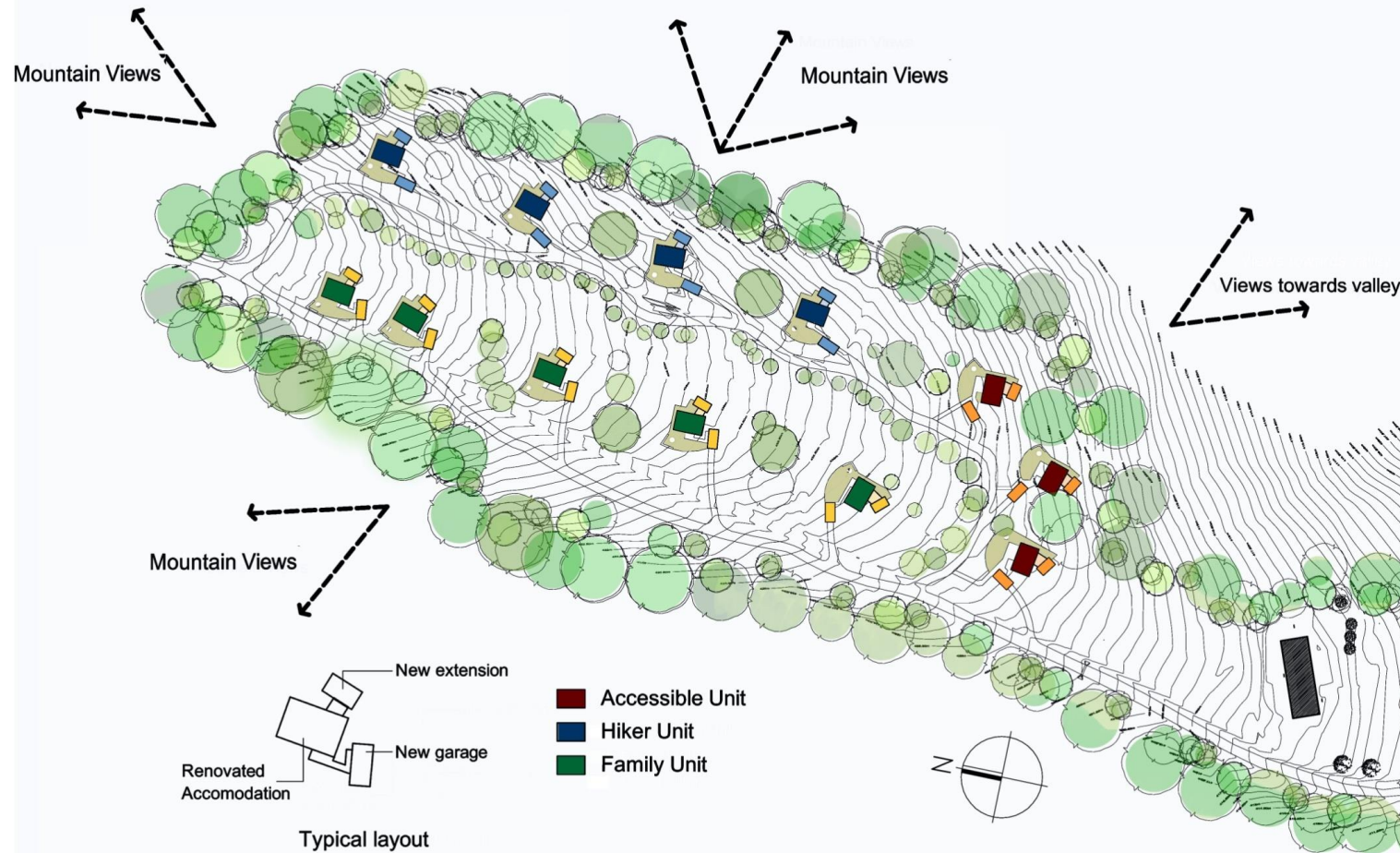


RECYCLING AND UPCYCLING  
**GROOTVADERSBOSCH NATURE RESERVE**



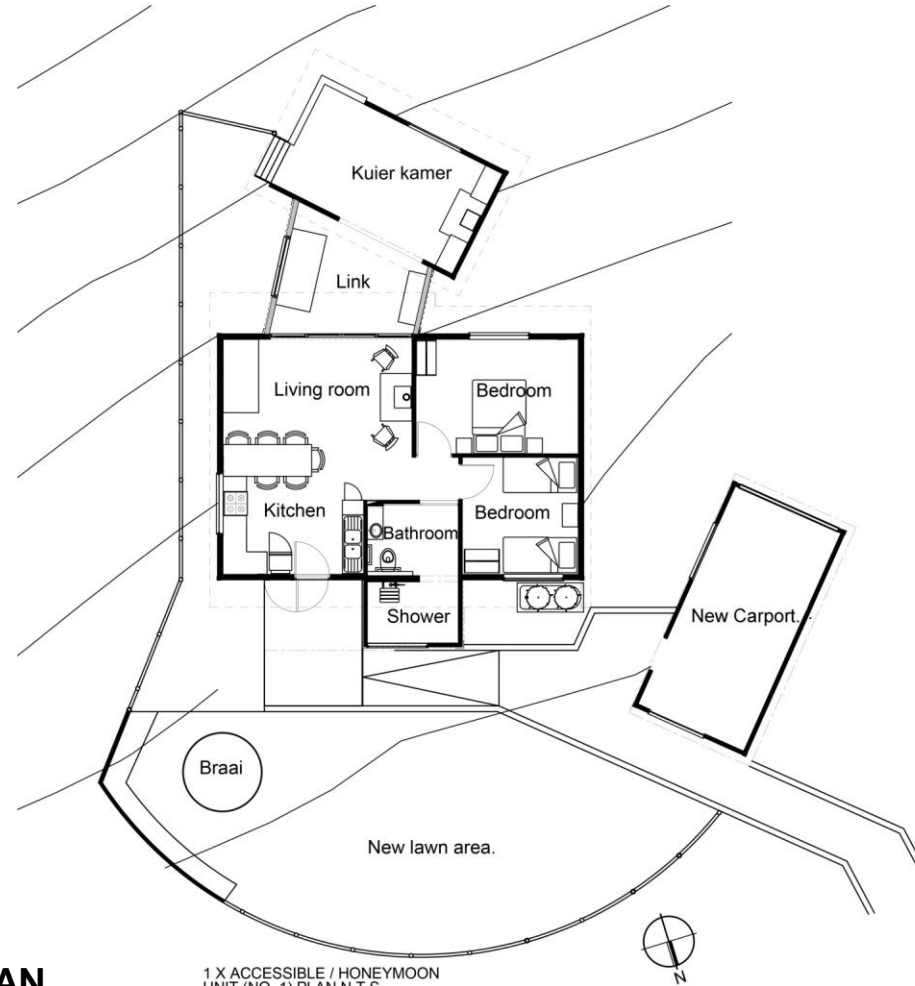


## RECYCLING AND UPCYCLING GROOTVADERSBOSCH NATURE RESERVE



**SITE PLAN**

RECYCLING AND UPCYCLING  
**GROOTVADERSBOSCH NATURE RESERVE**



**ACCESSIBLE UNIT PLAN**

1 X ACCESSIBLE / HONEYMOON  
UNIT (NO. 1) PLAN N.T.S.

RECYCLING AND UPCYCLING  
**GROOTVADERSBOSCH NATURE RESERVE**



RECYCLING AND UPCYCLING  
**GROOTVADERSBOSCH NATURE RESERVE**



RECYCLING AND UPCYCLING  
**GROOTVADERSBOSCH NATURE RESERVE**



RECYCLING AND UPCYCLING  
**GROOTVADERSBOSCH NATURE RESERVE**



RECYCLING AND UPCYCLING  
**GROOTVADERSBOSCH NATURE RESERVE**



RECYCLING AND UPCYCLING  
**GROOTVADERSBOSCH NATURE RESERVE**





RECYCLING AND UPCYCLING  
GROOTVADERSBOSCH NATURE RESERVE



RECYCLING AND UPCYCLING  
**GROOTVADERSBOSCH NATURE RESERVE**



RECYCLING AND UPCYCLING  
**GROOTVADERSBOSCH NATURE RESERVE**



RECYCLING AND UPCYCLING  
**GROOTVADERSBOSCH NATURE RESERVE**



RECYCLING AND UPCYCLING  
**GROOTVADERSBOSCH NATURE RESERVE**



**KUIER KAMER**

RECYCLING AND UPCYCLING  
**GROOTVADERSBOSCH NATURE RESERVE**



RECYCLING AND UPCYCLING  
**GROOTVADERSBOSCH NATURE RESERVE**



RECYCLING AND UPCYCLING  
**GROOTVADERSBOSCH NATURE RESERVE**







COLLABORATION  
**ULWAZI YOUTH CENTRE, LANGA**



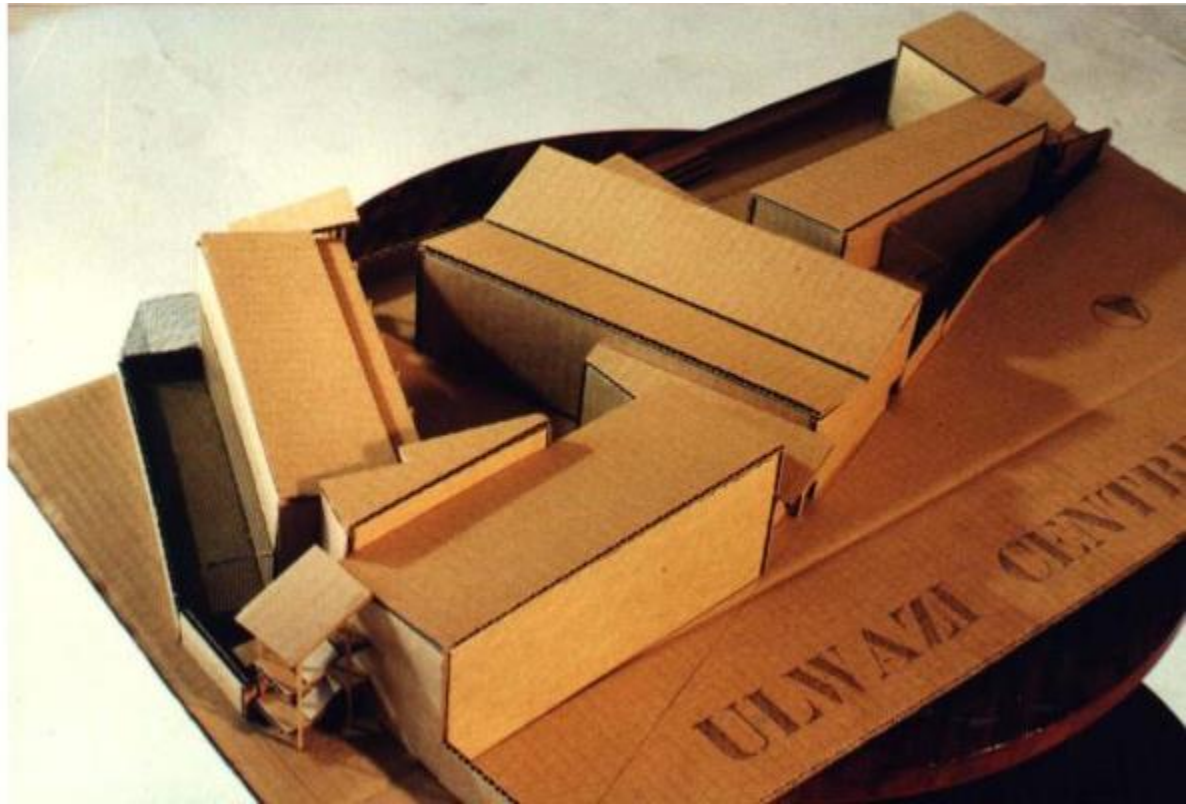
COLLABORATION  
ULWAZI YOUTH CENTRE, LANGA



COLLABORATION  
**ULWAZI YOUTH CENTRE, LANGA**



COLLABORATION  
**ULWAZI YOUTH CENTRE, LANGA**



COLLABORATION  
**ULWAZI YOUTH CENTRE, LANGA**



COLLABORATION  
**ULWAZI YOUTH CENTRE, LANGA**



COLLABORATION  
ULWAZI YOUTH CENTRE, LANGA





COLLABORATION  
**ULWAZI YOUTH CENTRE, LANGA**



COLLABORATION  
**ULWAZI YOUTH CENTRE, LANGA**



COLLABORATION  
**ULWAZI YOUTH CENTRE, LANGA**



COLLABORATION  
**ULWAZI YOUTH CENTRE, LANGA**

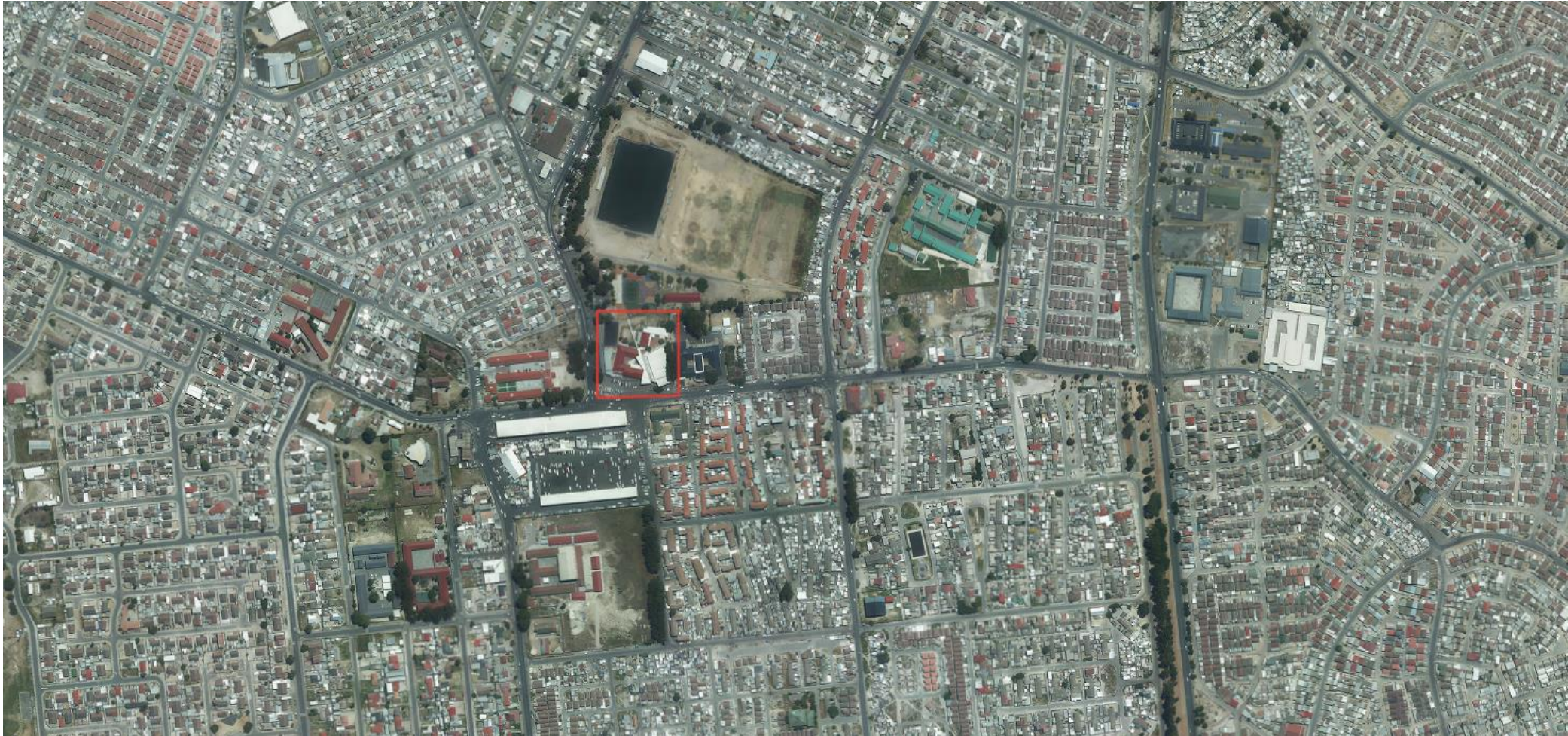


COLLABORATION  
**ULWAZI YOUTH CENTRE, LANGA**



DEMOLITION 2009

COLLABORATION  
**ZOLANI MULTI-PURPOSE CENTRE, NYANGA**



COLLABORATION  
**ZOLANI MULTI-PURPOSE CENTRE, NYANGA**

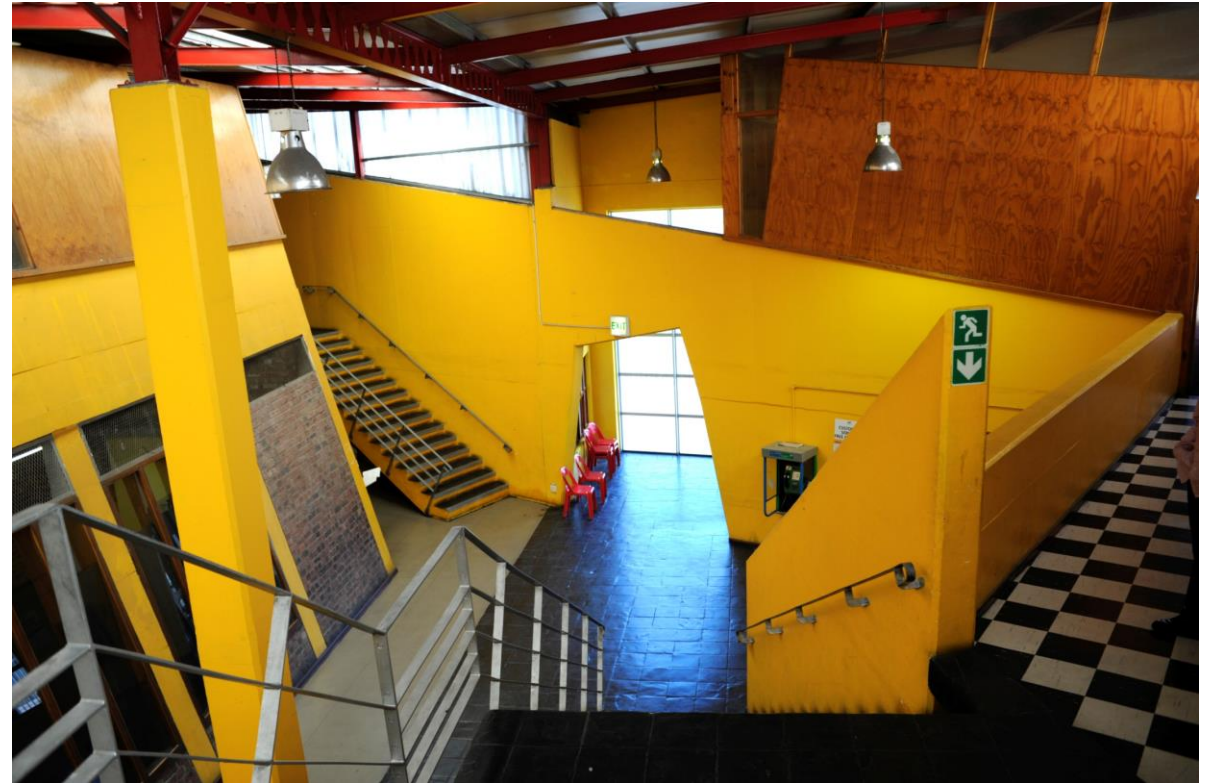


COLLABORATION  
**ZOLANI MULTI-PURPOSE CENTRE, NYANGA**





COLLABORATION  
**ZOLANI MULTI-PURPOSE CENTRE, NYANGA**



COLLABORATION  
**ZOLANI MULTI-PURPOSE CENTRE, NYANGA**



COLLABORATION  
**ZOLANI MULTI-PURPOSE CENTRE, NYANGA**



COLLABORATION  
**ZOLANI MULTI-PURPOSE CENTRE, NYANGA**



COLLABORATION  
**GUGA S'THEBE CHILDRENS THEATRE , LANGA**





COLLABORATION  
**GUGA S'THEBE CHILDRENS THEATRE , LANGA**



COLLABORATION  
**GUGA S'THEBE CHILDRENS THEATRE , LANGA**





COLLABORATION  
**GUGA S'THEBE CHILDRENS THEATRE , LANGA**



COLLABORATION  
**GUGA S'THEBE CHILDRENS THEATRE , LANGA**



COLLABORATION  
**GUGA S'THEBE CHILDRENS THEATRE , LANGA**



COLLABORATION  
**GUGA S'THEBE CHILDRENS THEATRE , LANGA**



COLLABORATION  
**GUGA S'THEBE CHILDRENS THEATRE , LANGA**



COLLABORATION  
**GUGA S'THEBE CHILDRENS THEATRE , LANGA**



COLLABORATION  
**GUGA S'THEBE CHILDRENS THEATRE , LANGA**



**2020 FIRE**

COLLABORATION  
**GUGA S'THEBE CHILDRENS THEATRE , LANGA**





COLLABORATION  
**GUGA S'THEBE CHILDRENS THEATRE , LANGA**



COLLABORATION  
**GUGA S'THEBE CHILDRENS THEATRE , LANGA**



COLLABORATION  
**GUGA S'THEBE CHILDRENS THEATRE , LANGA**



**GLOBAL AWARD FOR SUSTAINABLE ARCHITECTURE**  
COMMERCIAL CENTRE, FOLLAINVILLE, FRANCE



**GLOBAL AWARD FOR SUSTAINABLE ARCHITECTURE**  
**GRAND PRIX INTERNATIONAL D'ARCHITECTURE DURABLE**

COLLECTION MANIFESTE D'ARCHITECTURE DU XXI<sup>ÈME</sup> SIECLE EN SEINE AVAL™



9<sup>e</sup> COLLOQUE  
NATIONAL  
INTERPROFESSIONNEL

DES SOLUTIONS  
DURABLES  
POUR DES  
BÂTIMENTS  
RÉSILIENTS  
FACE AU  
CHANGEMENT  
CLIMATIQUE

## GLOBAL AWARD WORKSHOP WITH ADULTS



# #9 BÂTIFRAIS

Colloque confort d'été dans  
les bâtiments et les quartiers 2024

9<sup>e</sup> COLLOQUE  
NATIONAL  
INTERPROFESSIONNEL

DES SOLUTIONS  
DURABLES  
POUR DES  
BÂTIMENTS  
RÉSILIENTS  
FACE AU  
CHANGEMENT  
CLIMATIQUE

## GLOBAL AWARD WORKSHOP WITH KIDS

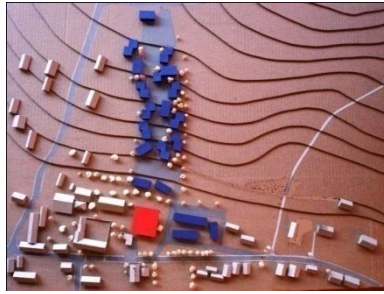


DES SOLUTIONS  
DURABLES  
POUR DES  
BÂTIMENTS  
RÉSILIENTS  
FACE AU  
CHANGEMENT  
CLIMATIQUE

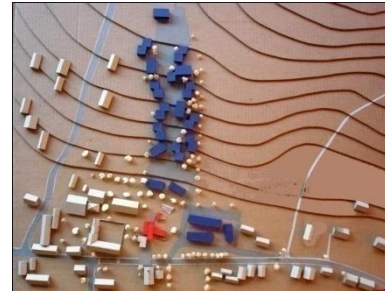


DES SOLUTIONS  
DURABLES  
POUR DES  
BÂTIMENTS  
RÉSILIENTS  
FACE AU  
CHANGEMENT  
CLIMATIQUE

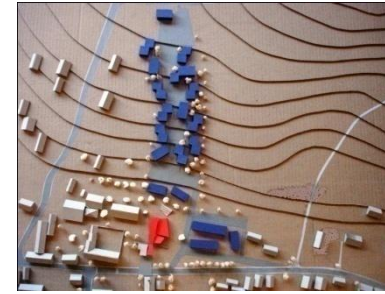
**OUTDOOR/  
INDOOR ROOM**



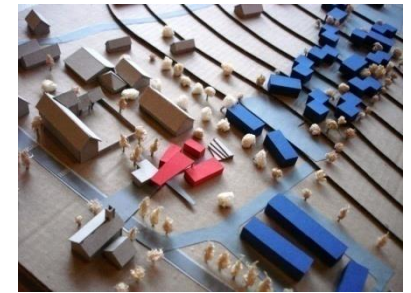
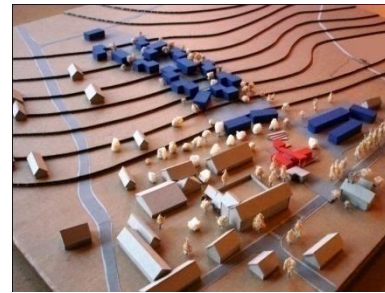
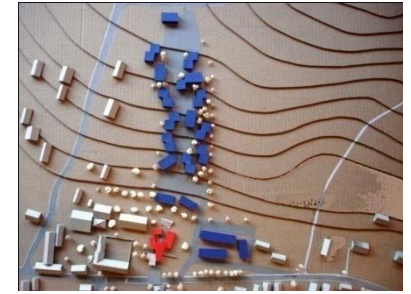
**L-SHAPE**



**ZIG ZAG**



**COHESION**

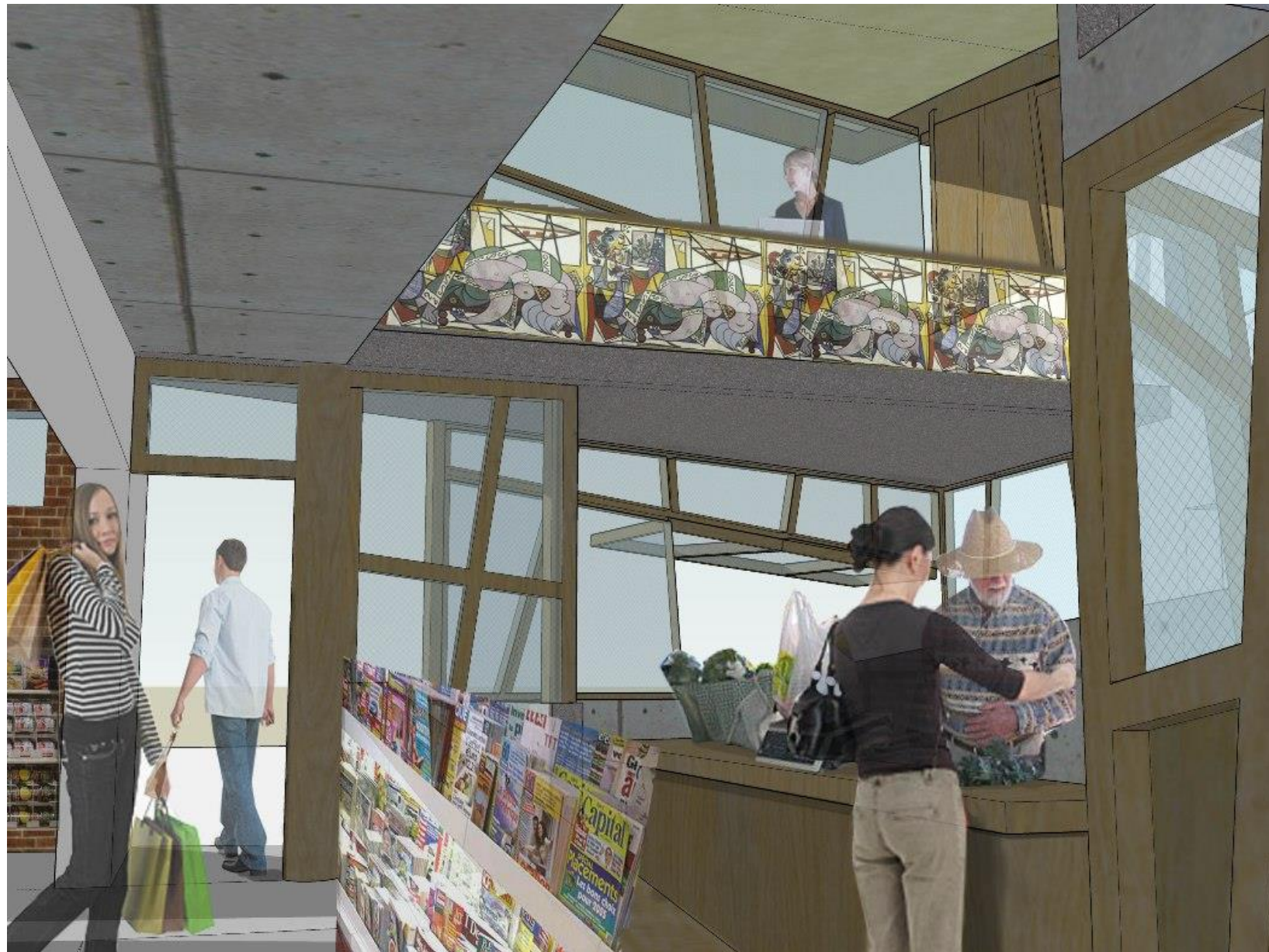




DES SOLUTIONS  
DURABLES  
POUR DES  
BÂTIMENTS  
RÉSILIENTS  
FACE AU  
CHANGEMENT  
CLIMATIQUE



DES SOLUTIONS  
DURABLES  
POUR DES  
BÂTIMENTS  
RÉSILIENTS  
FACE AU  
CHANGEMENT  
CLIMATIQUE



DES SOLUTIONS  
DURABLES  
POUR DES  
BÂTIMENTS  
RÉSILIENTS  
FACE AU  
CHANGEMENT  
CLIMATIQUE



THANK YOU



#9  
**BÂTIFRAIS**  
Colloque confort d'été dans  
les bâtiments et les quartiers 2024

9<sup>e</sup> COLLOQUE  
NATIONAL  
INTERPROFESSIONNEL

**CONFORT  
D'ÉTÉ**

